

Most realistic teeth trainers



# 3D ROOTS SIM-X

A new dimension for dental X-Ray training



**DIGITAL  
ANATOMICS**

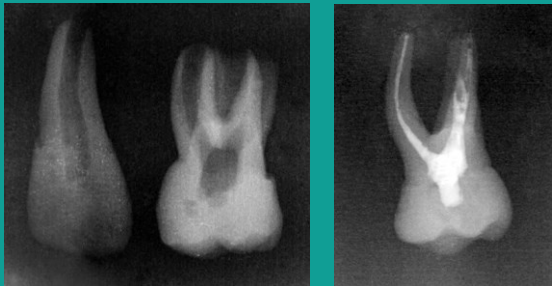
TECHNOLOGY SOLUTIONS FOR HEALTHCARE

## Characteristics that make them unique



**3D ROOTS SIM-X** is the first dental x-ray typodont simulator that allows to take radiological images with differentiation between dentine and pulp tissue. compatible with standard manikin phatom heads.

- Compatible with standard manikin phatom heads.
- Possibility to replace all our **3D ROOTS TOOTH** models in the basic range.



The upper and lower jaw typodont has a **flexible slot** for the positioning of the **phosphor plate**.

**3D ROOTS TOOTH** models look like real teeth on X ray and CBCT images.



**Your students deserve the best**

## Catalogue

### Typodonts


**REF**
**Description**

REF	Description
SIM-X-UJ	Upper jaw typodont
SIM-X-LW	Lower jaw typodont

\*3D ROOTS TOOTH replicas are not included

Complete set of pictures and features are available at <https://tienda.digitalanatomics.com/>

### Phantom head


**REF**
**Canals**

REF	Canals
SM-001	Standard dental manikin

\*3D ROOTS TOOTH replicas and SIM-X typodont are not included

### Tooth replicas


**REF**
**Canals**

REF	Canals
3D-ROOTS-UJ-01	Upper jaw 14 teeth set
3D-ROOTS-LJ-01	Lower jaw 14 teeth set

## About Digital Anatomics

Digital Anatomics is a biomedical engineering company.

Its know-how includes mechanical engineering, software development and 3D printing.

We are bringing engineering resources to healthcare education and practice in order to improve professionals' performance and so improving people wellness all over the world.

We are very grateful to some of those professionals who provide their support for developing advanced solutions in order to make healthcare practice more efficient and accessible.



**"Wherever the art of Medicine is loved,  
there is also a love of Humanity"**

(Hippocrates)